



**State of New Hampshire
Department of Health and Human Services**

Division for Children, Youth, and Families

**Presented to Senate Finance May 3, 2021
Joseph E. Ribsam Jr.**

Mission

We partner with families & communities to provide resources and supports that lead to the safety and healthy development of children, youth, and the communities in which they live.



Overview - Division for Children, Youth, & Families

Child Protective Services:

Investigate and assess allegations of child abuse and neglect. Provide for the safety, permanency, and well-being of child victims or children at risk of maltreatment.

Juvenile Justice Services:

Support children and youth to remediate challenges with delinquency to promote child, family, and community safety. Support children and youth identified as Children in Need of Services

Sununu Youth Services Center:

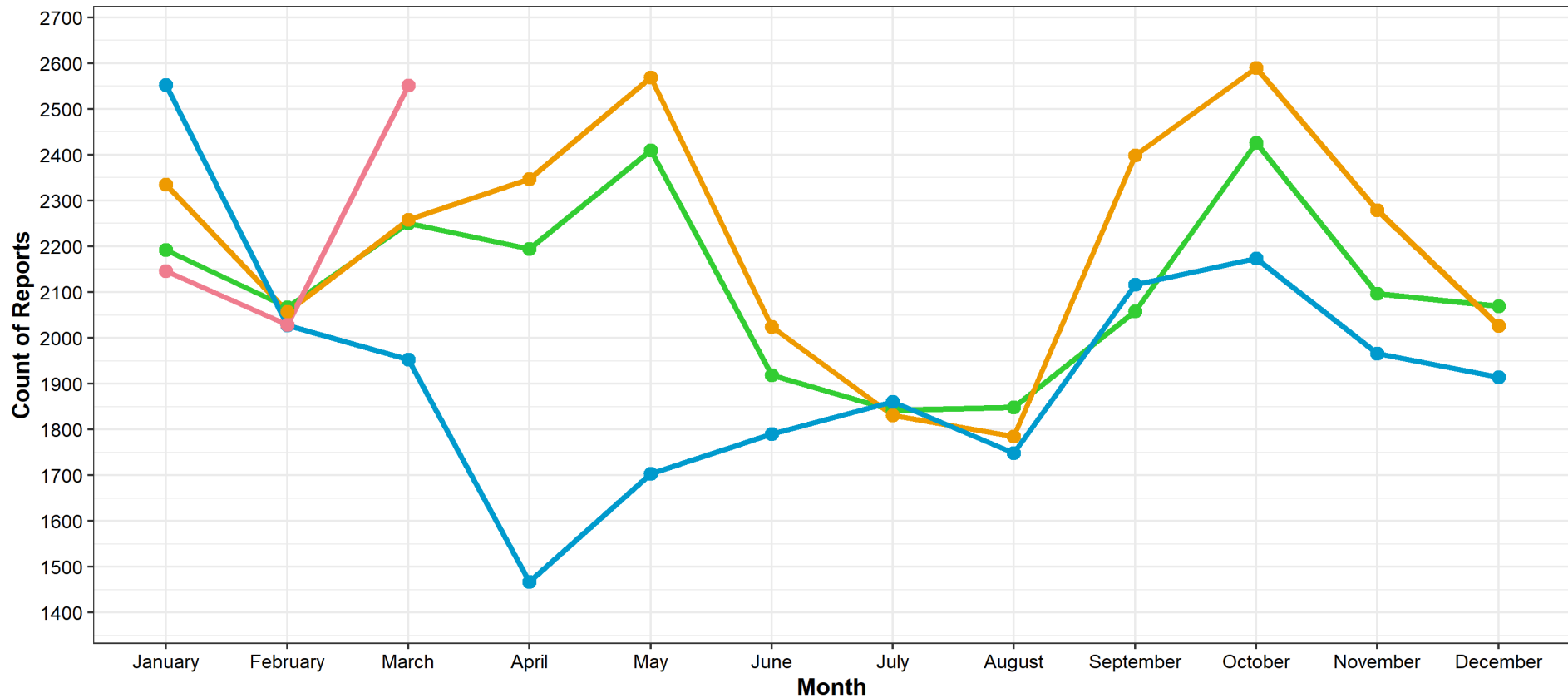
Provide a safe and secure environment for all detained and committed youth in NH to receive crisis intervention, mental & physical health, and educational services in a secure setting. Ensure safety and well being of committed and detained youth and the overall safety of the community.



Child Protective Services – Calls to Intake

Child Protection: Reports To Central Intake Comparing 2018 - 2021

Year ● 2018 ● 2019 ● 2020 ● 2021



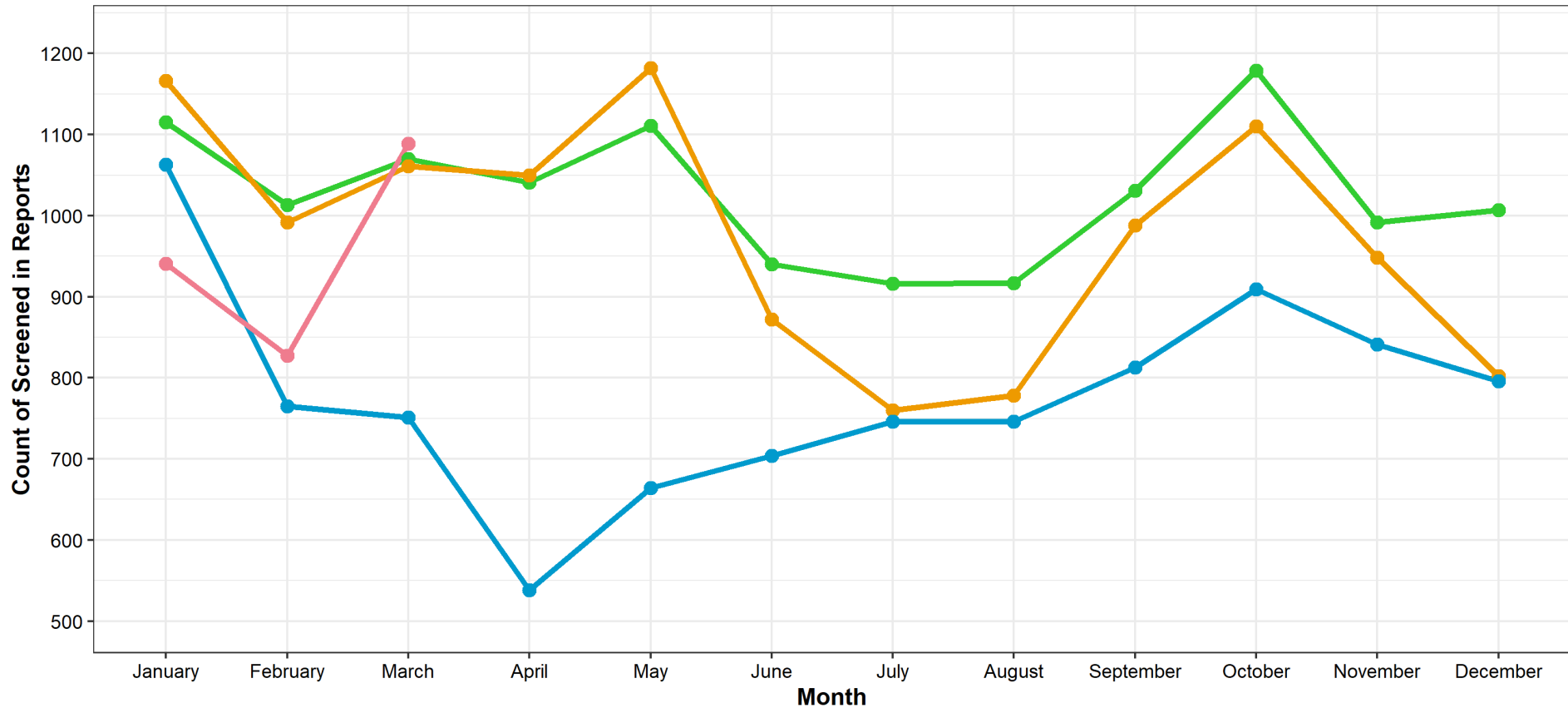
Extracted from Bridges (NH SACWIS) on 04/07/2021



Child Protective Services – New Assessments

Child Protection: Screened In Referrals (accepted for further assessment)
Comparing 2018 - 2021

Year ● 2018 ● 2019 ● 2020 ● 2021



Extracted from Bridges (NH SACWIS) on 04/07/2021



Child Protective Services - Assessment Caseloads (Target 12)

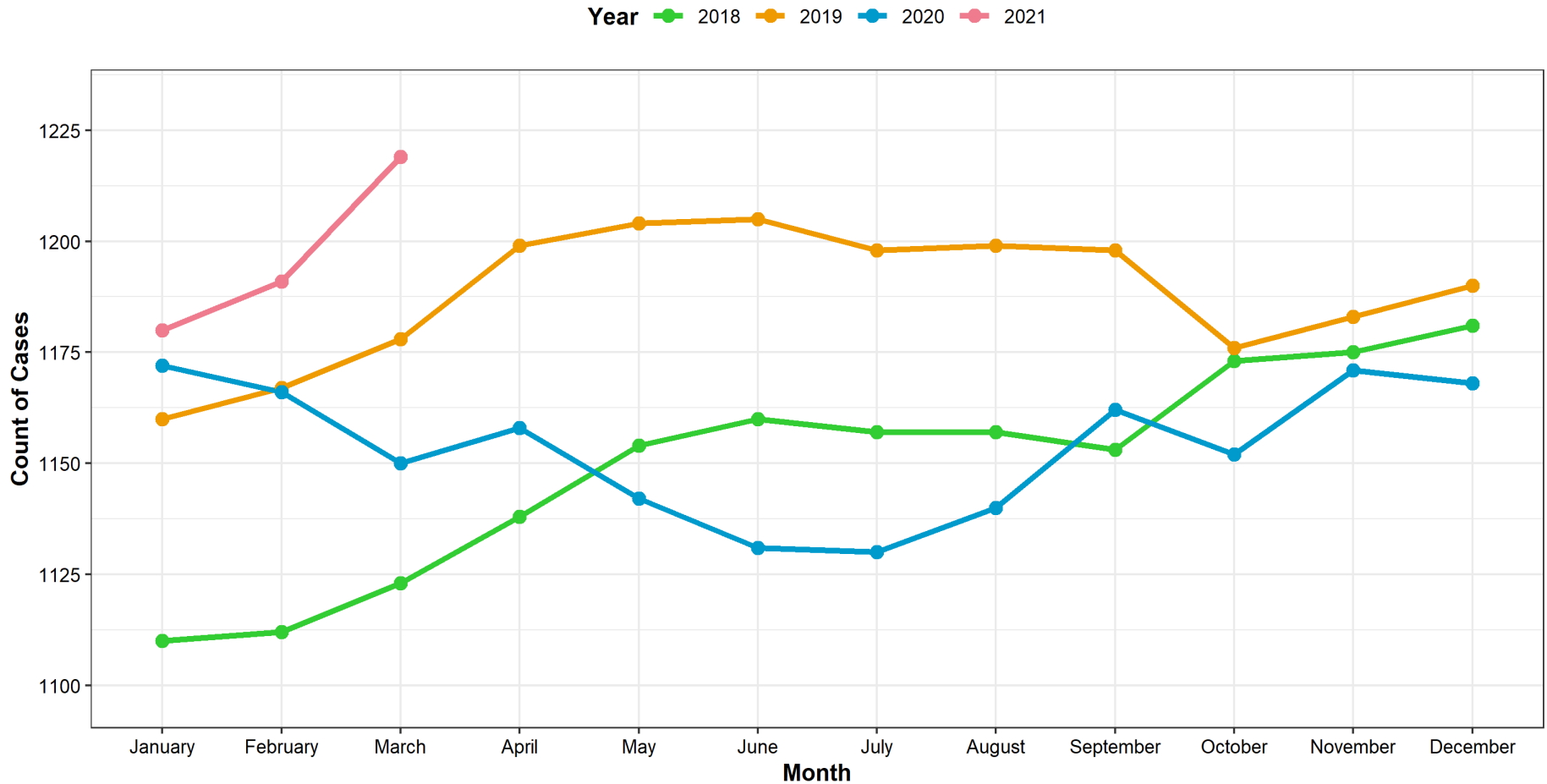
Average Assessments Assigned Per CPSW 2016-2021 (Last day of Month)



Child Protective Services – Family Service Cases

Child Protection: Case Counts

Comparing Active Cases on the First of the Month: 2018 - 2021

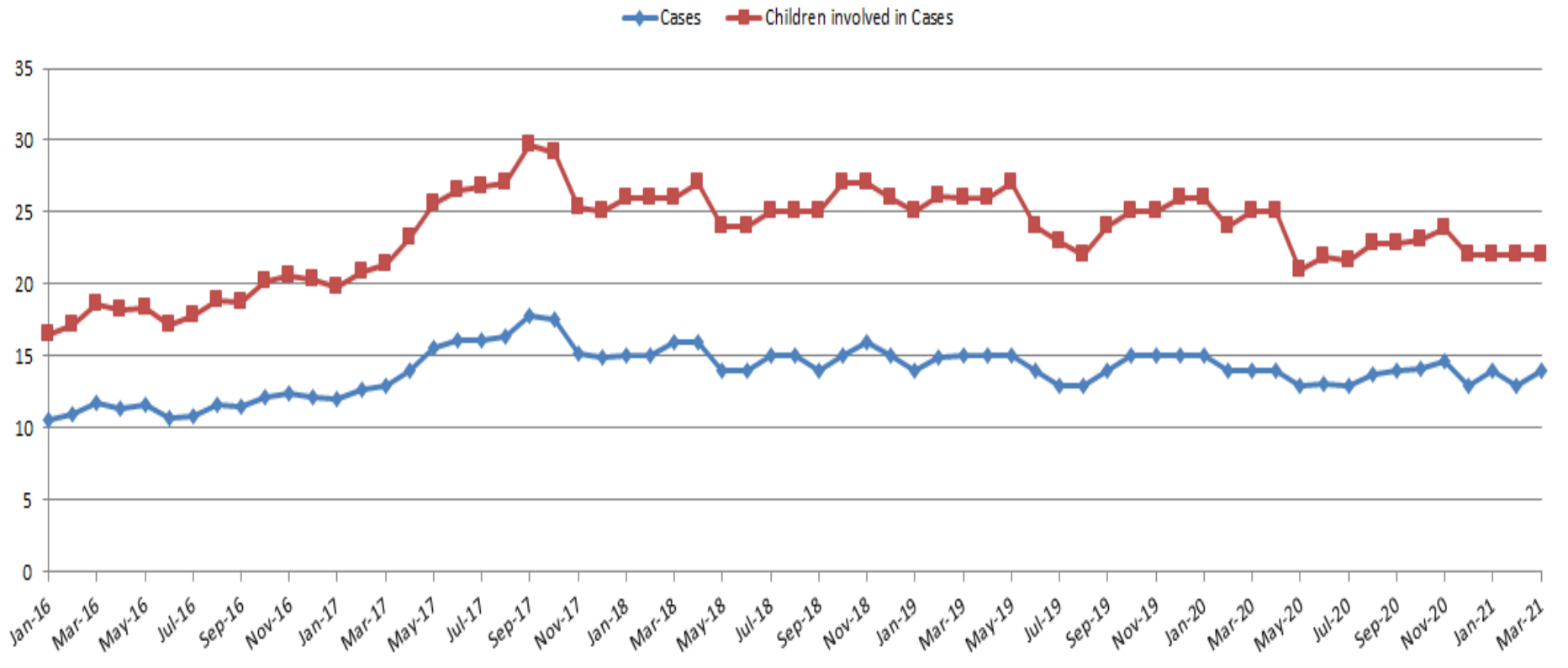


Extracted from Bridges (NH SACWIS) on 04/07/2021



Child Protective Services – Family Service Caseloads (Target 10)

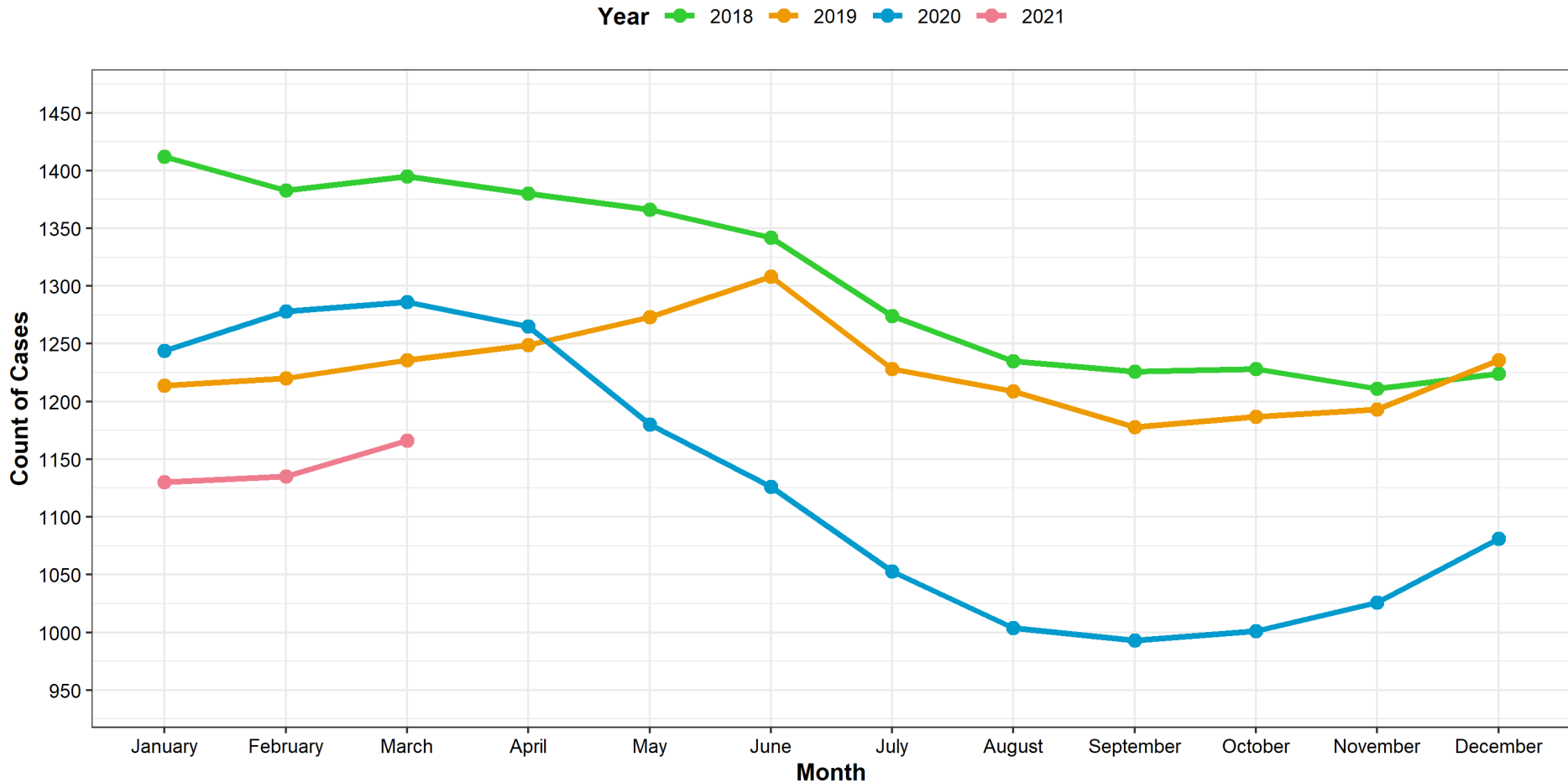
Average Number of Cases and Children Assigned per CPSW (Last day of the Month, 2016-2021)



Juvenile Justice Services – Open Cases by State Fiscal Year

Juvenile Justice: Case Counts

Comparing Active Cases on the First of the Month: 2018 - 2021



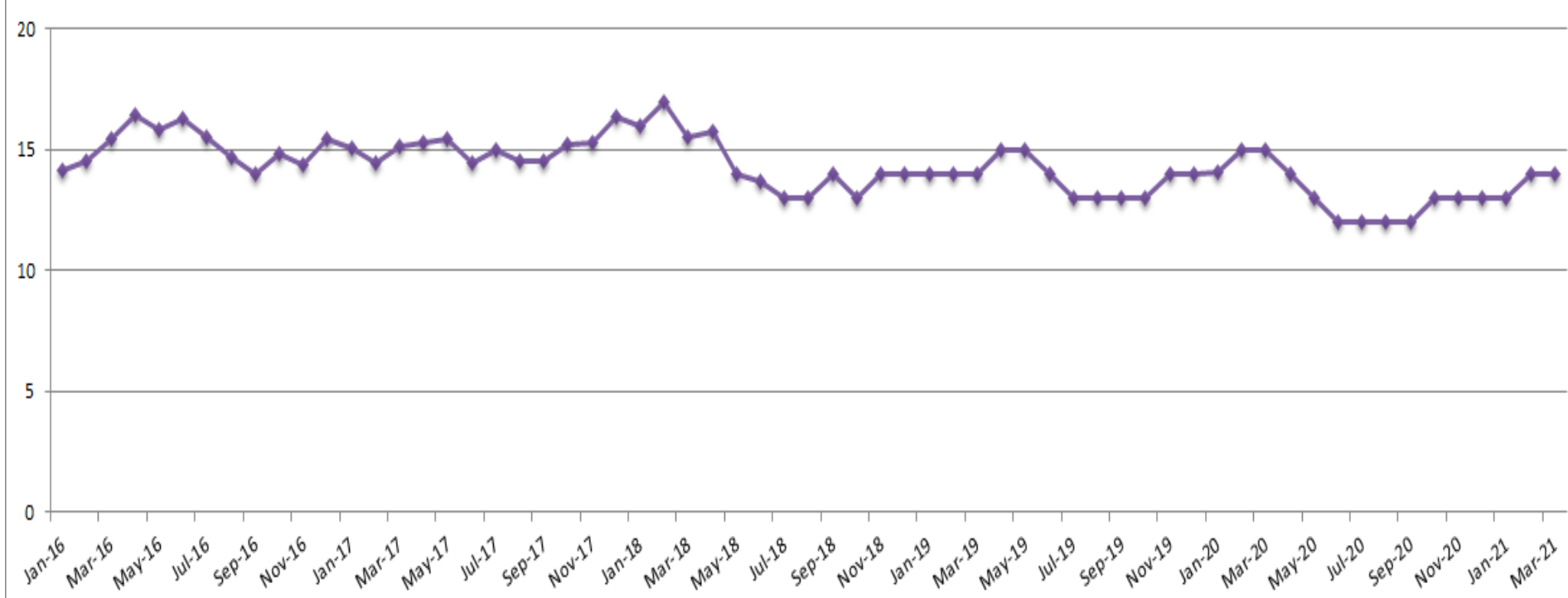
Extracted from Bridges (NH SACWIS) on 04/07/2021



Juvenile Justice Services – Caseloads

Adjusted Average # of Cases per JPPO (Last Day of Month)

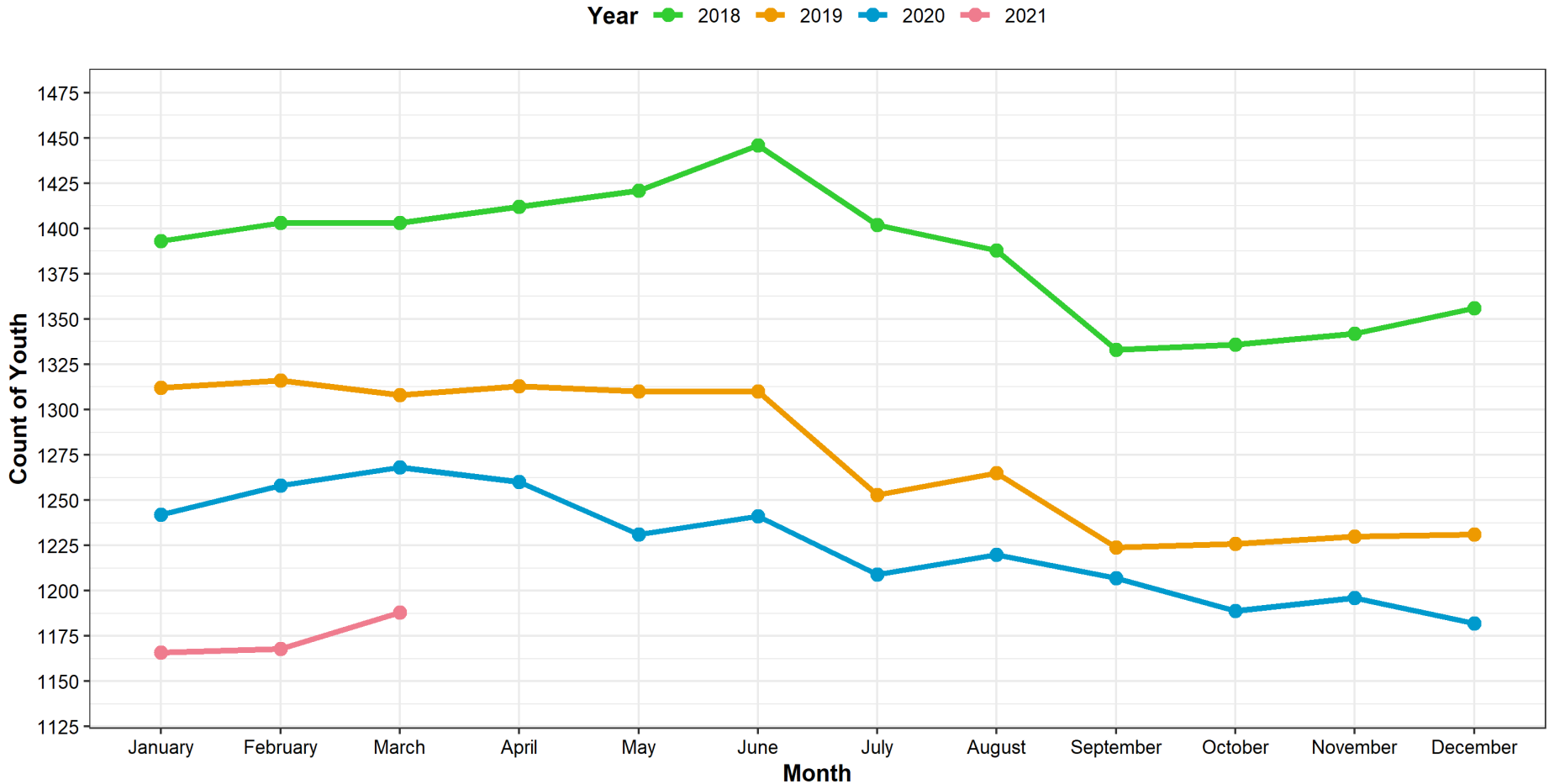
JJ Cases



Child Protection & Juvenile Justice – Youth in Out-of-Home Care

DCYF Placement Counts

CPS and JJS Combined: Count of Youth in Placement on the First of the Month: 2018 - 2021



Extracted from Bridges (NH SACWIS) on 04/07/2021



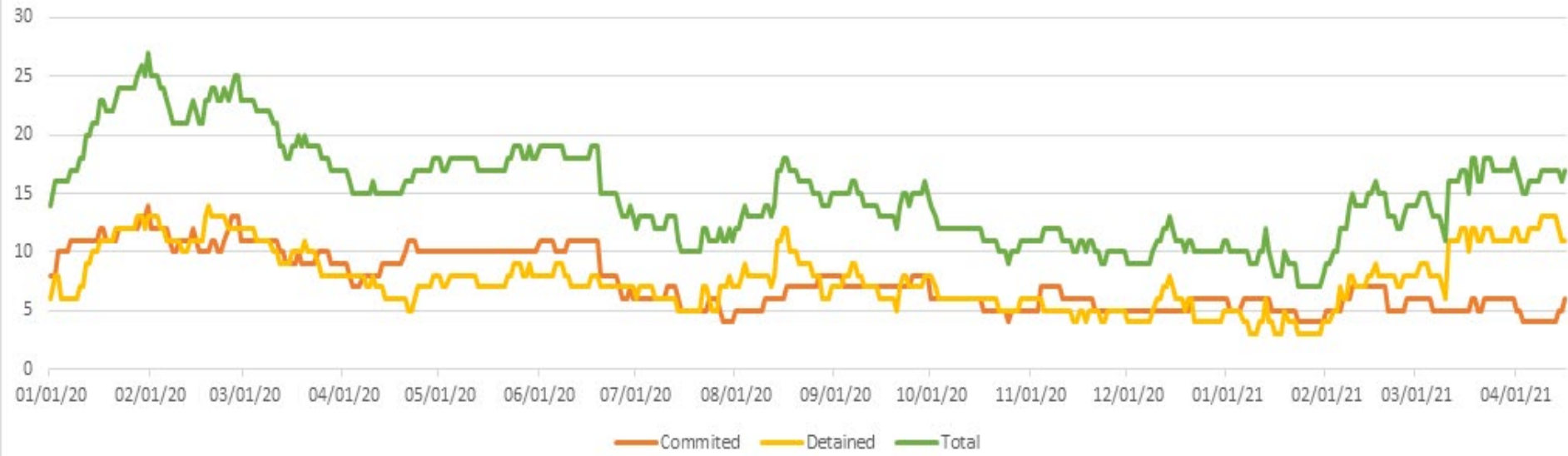
Sununu Youth Services Center – Census by State Fiscal Year

Population															
	2016			2017			2018			2019			2020		
	COM	DET	TOT	COM	DET	TOT	COM	DET	TOT	COM	DET	TOT	COM	DET	TOT
Youths*	257			254			172			101			78		
Admissions	105	255	360	108	214	322	74	138	212	81	64	145	48	60	108
Discharges	89	247	336	117	219	336	87	139	226	96	70	166	57	58	115
Average Populati	48.0	15.9	63.8	51.7	12.5	64.1	35.3	9.9	45.1	21.2	5.8	26.9	10.5	6.5	16.9
Youth Days	17,468	5,564	23,033	18,755	4,338	23,092	12,754	3,457	16,211	7,738	2,117	9,855	3,827	2,386	6,198



Sununu Youth Services Center – Daily Census

January 1st, 2020 - April 18th, 2021



Challenges for SFY2022/2023

Child Protection: Fund 22 CPSW positions, consistent with Governor's letter of March 3, 2021

SYSC: Fund Fiscal Year 23 consistent with Governor's proposed budget



Budget Overview: Activity 4210, 4214 & 4215

	SFY2020 Actual	SFY2021 Adjusted Authorized	SFY2022 Governor Budget	SFY2022 House Budget	SFY2023 Governor Budget	SFY2023 House Budget	SFY 2022/23 Total Requested Changes*
Activity 4210: Child Protection							
General Funds	\$ 69,634,162	\$ 80,145,917	\$ 68,042,877	\$ 68,196,209	\$ 71,627,825	\$ 71,781,154	\$ 2,369,767
TOTAL FUNDS	\$ 126,308,961	\$ 138,674,178	\$ 107,360,059	\$ 107,552,441	\$ 112,165,336	\$ 112,165,336	\$ 3,316,215
Activity 4214: Juvenile Justice							
General Funds	\$ 7,449,385	\$ 8,740,735	\$ 8,735,750	\$ 8,735,750	\$ 9,167,328	\$ 9,167,328	\$ 0
TOTAL FUNDS	\$ 11,015,174	\$ 12,105,958	\$ 12,101,173	\$ 12,101,173	\$ 12,659,274	\$ 12,659,274	\$ 0
Activity 4215: Sununu Youth Services Center							
General Funds	\$ 9,648,050	\$ 11,566,347	\$ 11,732,209	\$ 11,732,209	\$ 12,351,111	\$ 0	\$ 12,351,111
TOTAL FUNDS	\$ 10,057,648	\$ 12,373,827	\$ 13,129,803	\$ 13,129,803	\$ 13,806,253	\$ 0	\$ 13,806,253

*Detail on following slide



Requested Changes to House Budget

	SFY 2022	FFY 2023
Activity 4210: Child Protection		
General Funds	\$ 1,143,541	\$ 1,226,226
TOTAL FUNDS	\$ 1,600,253	\$ 1,715,962
Activity 4214: Juvenile Justice		
General Funds	\$ 0	\$ 0
TOTAL FUNDS	\$ 0	\$ 0
Activity 4215: Sununu Youth Services Center		
General Funds	\$ 0	\$ 12,351,111
TOTAL FUNDS	\$ 0	\$ 13,806,253

1Y – 10Y SYSC: Fund fiscal year 23

1G Child Protection: Fund 22 CPSW positions

