




State of New Hampshire
Forensic Hospital Information
Session

04-12-2021



Heather Moquin- CEO, 24/7 Care Facilities

Joe Caristi- CFO, 24/7 Care Facilities

Jason Teaster, Director- Facilities, New Hampshire Hospital

Outline

- System Needs
- Funding & Policy History
- Progress Report
- Design Review
- RFP Approach
- Summary



System Needs



System Needs- Background

- In New Hampshire, as we have no other appropriate facility to treat acute mental illness for forensic patients, forensic patients, including those whom are civilly committed for treatment, are cared for at the secure psychiatric unit (SPU) at the state prison.
- The remainder of forensic patients are treated at New Hampshire Hospital, but the Hospital is not well suited for this type of care.
- In 2019, a lawsuit was filed due to the unlawful confinement of civilly committed patients in a correctional facility.

System Needs- Patient Populations

- While the lawsuit was specific to civilly committed patients, there is a need for a facility that can help many other patient cohorts.

		FY2019 Admissions to SPU	FY2020 Admissions to SPU
<p>Patients for which there is no appropriate care setting</p> <p>Civilly committed</p>	Patient Population		
	Civilly committed due to dangerousness	7	6
	Civilly committed, sexually violent predator	3	0
	Has an intellectual disability, not competent, and dangerous	0	0
	Not guilty by reason of insanity (NGRI)	4	5
	Emergency Transfer to SPU from NHH	3	6
	Forensic patients currently at New Hampshire Hospital	24	24
	County or state prisoner in need of acute psychiatric service	18	32
Total	59	73	

System Needs- Emergency Room Boarding

- 24 beds at New Hampshire Hospital are currently occupied by forensic patients.
- These patients have very long lengths of stay compared to a regular admissions unit.
- If a 60 bed forensic hospital was constructed, these 24 beds at New Hampshire Hospital could be repurposed to help with emergency room boarding.
- Emergency room boarding would reduce due to additional beds being available, **and the unit would have shorter lengths of stay.**



Policy & Funding History



Policy & Funding History- FY20/21 Budget Cycle

- HB726 (LSR19-0113) was filed to establish an advisory council to research the idea of constructing a Forensic Hospital.
- During the Senate Phase of the budget, the Senate included \$17.5 million in funding for the construction of a 25 bed forensic hospital.
 - We believe this was calculated as half of the construction estimate the state had at the time (\$35 million).
- In Committee of Conference, this \$17.5 million was reduced to \$8.75 million.
 - \$8.75 million was subsequently appropriated as a part of HB4 and is non-lapsing.
 - It was known at this time that additional funding would be necessary to finish the project.

Policy & Funding History- FY22/23 Budget Cycle

- In the 2022/2023 budget planning cycle, the Governor's office reintroduced the original \$17.5 million figure to further fund the project.
- This \$17.5 million was included as a part of HB2 instead of the capital budget due to the historical precedence of the previous biennium, but the Department is treating this just like any other capital project, and is following capital project protocols.
- The House has removed the \$17.5 million in funding in HB2 for this project.
- The Department and Governor's office are currently awaiting guidance from the U.S. Treasury to see if federal funding can be used for this type of project.

Overall Funding Summary

Funding Requests	Amount
Total Appropriation in FY20/21 Biennium (non-lapsing)	\$8,750,000
FY22/23 Governor's Budget Request	\$17,500,000
Total Funds If Governor's recommendation was approved	\$26,250,000

Construction Estimates	Amount
FY20/21 Biennium Construction Estimate for 25 beds	\$35,000,000
FY22/23 Biennium Construction Estimate for 25 beds	\$40,000,000

**Construction estimates are preliminary figures based on initial design requirements. As design requirements are further defined, more precise estimates will be generated.*

Can you bill for Forensic Hospital Services?

- Forensic Hospital's are allowed to bill in a similar fashion to New Hampshire Hospital, **although it's much more nuanced.**
 - Nuances relate to care being a medical necessity vs. a legal necessity
- The hospital must be designed to Joint Commission standards in order to bill.
- The Department is trying to determine if the facility would qualify for Disproportionate Share Hospital (DSH) payments, which help offset the cost of uncompensated care.



FY20/21 Biennium Progress Report



What did the department do with the \$8.75 million that was appropriated in HB4?

- In FY2020, the first three months of the year were a continuing resolution, meaning little progress could be made during this time.
- In October of 2020, the continuing resolution ended, and design conversations began with Public Works.
- In January of 2020, COVID-19 started to emerge, and in February COVID-19 was the sole focus for The Department, and for New Hampshire Hospital.

What did the department do with the \$8.75 million that was appropriated in HB4?

- Once staff were fully vaccinated in January 2021, the Hospital could start to focus on this project again.
- Initial design meetings have taken place, an architect has been contracted through Public Works, and we've begun to outline design requirements for the facility.
- The Department and Public Works have also met with Concord City Officials, and these meetings will be held periodically moving forward.



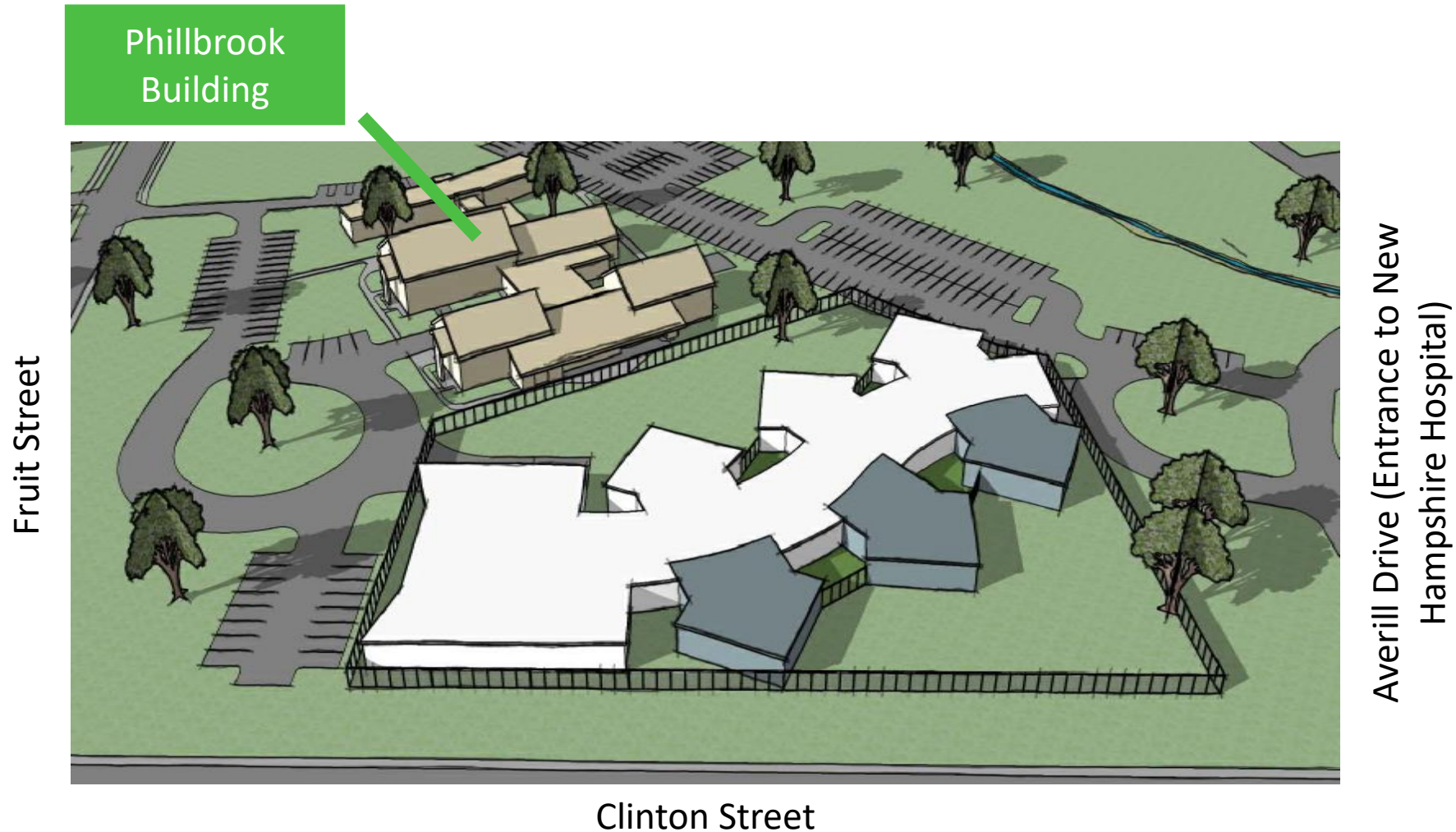
Design & RFP Plan Review



Design Review

- The Department intends to design a facility for 25 beds that could be easily expanded to 60, should funding allow.
- In the following diagrams, white buildings indicate space necessary for 25 beds, and grey buildings indicate the additional space necessary for 60 beds.

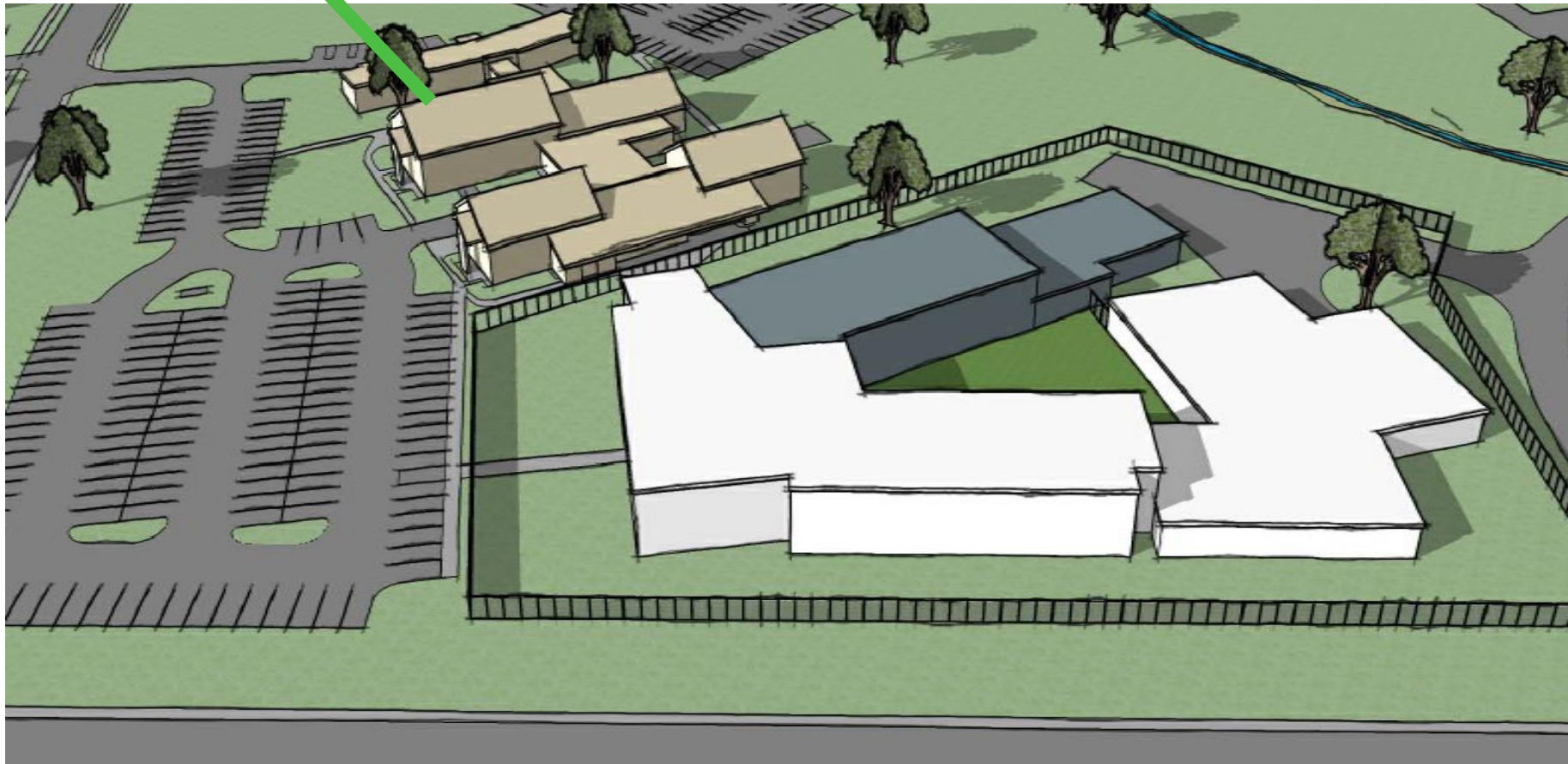
Conceptual Design 1 (1 Story)



Conceptual Design 2 (2 Story)

Phillbrook
Building

Fruit Street



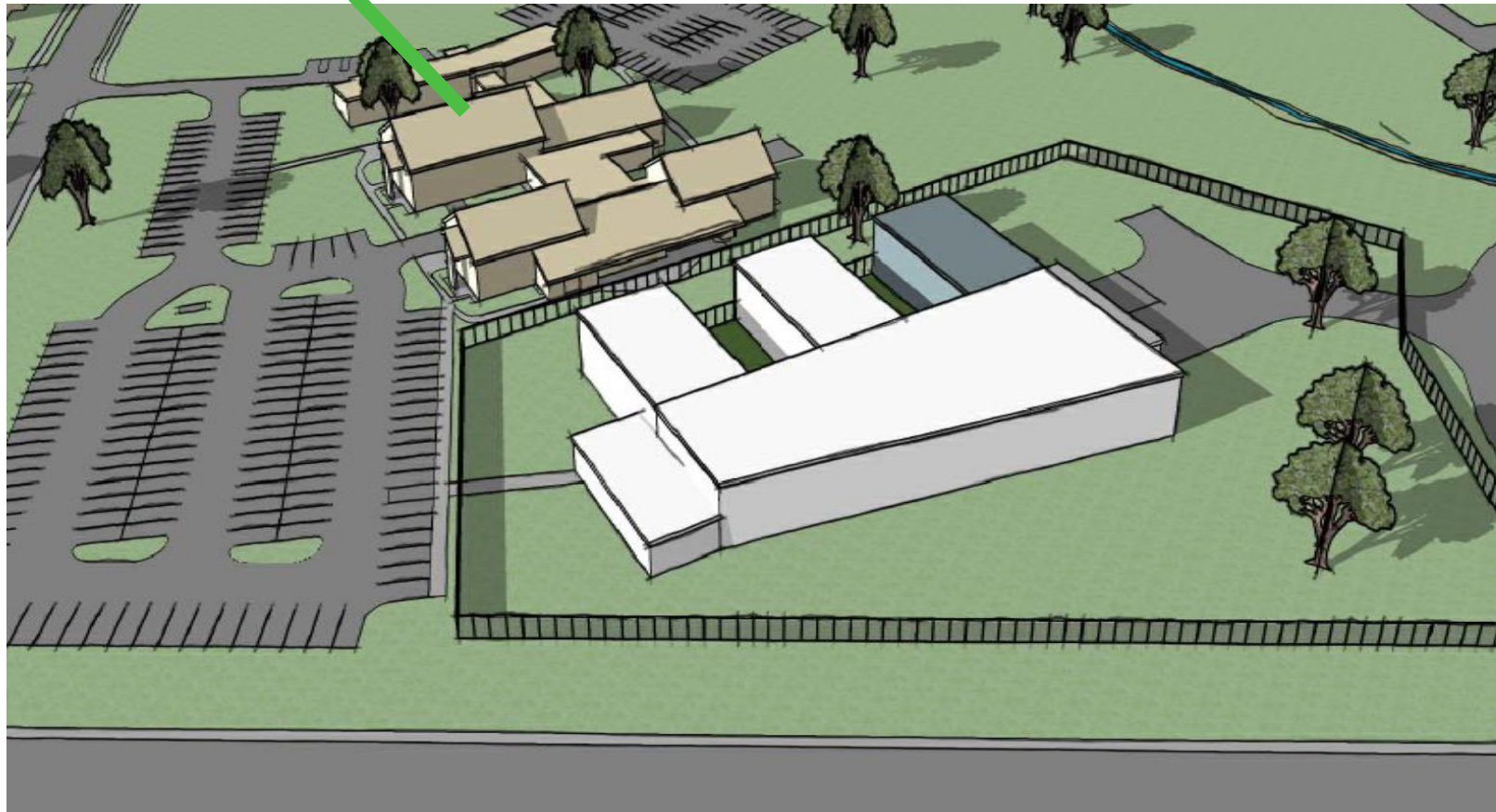
Clinton Street

Averill Drive (Entrance to New
Hampshire Hospital)

Conceptual Design 3 (2 Story)

Phillbrook
Building

Fruit Street



Clinton Street

Averill Drive (Entrance to New
Hampshire Hospital)

Design Summary

- Significant focus is being placed on outlining design requirements.
- The corner of Fruit Street and Clinton Street was been used for conceptual designs because it has the least amount of challenges relative to the water table in the state office complex.
- Although the concepts were drawn on the corner of Fruit Street and Clinton Street, the department has not committed to a specific location yet.

RFP Plan

- In coordination with Public Works, the Department is pursuing requests for proposals (RFP) for a design-build delivery method .
 - This would allow for an expedited approach to contracting for this project.
- If additional funding is not available in the FY22/23 biennium through either federal or general fund means, the project will likely have to wait until the FY24/25 biennium.



Next Steps



Next Steps

1. Identify federal funding opportunities.
2. Continue working towards finalizing design requirements.
3. Chose a site that best fits the facilities design requirements.
4. Engage with various stakeholders to source their input.
5. Partner with the legislature to identify funding in the FY22/23 biennium.
6. Issue an RFP for a full design-build contract.



Questions?

