



**State of New Hampshire**  
**Department of Health and Human Services**

---

**The PATH Center**  
**Presented to House Finance Division III**  
**March 1st, 2021**  
**Heather Moquin- CEO**  
**Joe Caristi-CFO**

# Agenda

---

1. Overview & Delivery System
2. Key Performance Indicators
3. Key Accomplishments & Challenges
4. Benchmarks, Potential Outcomes, & Staffing
5. Financial Summary



# Contact Information

---

- Department Unique Identifier: 094
- Heather Moquin, Chief Executive Officer- NH Hospital, Glenclyff Home, & the PATH Center
  - [Heather.M.Moquin@dhhs.nh.gov](mailto:Heather.M.Moquin@dhhs.nh.gov)
  - 603-271-5205
- Joe Caristi, Chief Financial Officer- NH Hospital, Glenclyff Home, & the PATH Center
  - [Joseph.T.Caristi@dhhs.nh.gov](mailto:Joseph.T.Caristi@dhhs.nh.gov)
  - 603-271-5398



# Overview & Delivery System

PATH Center



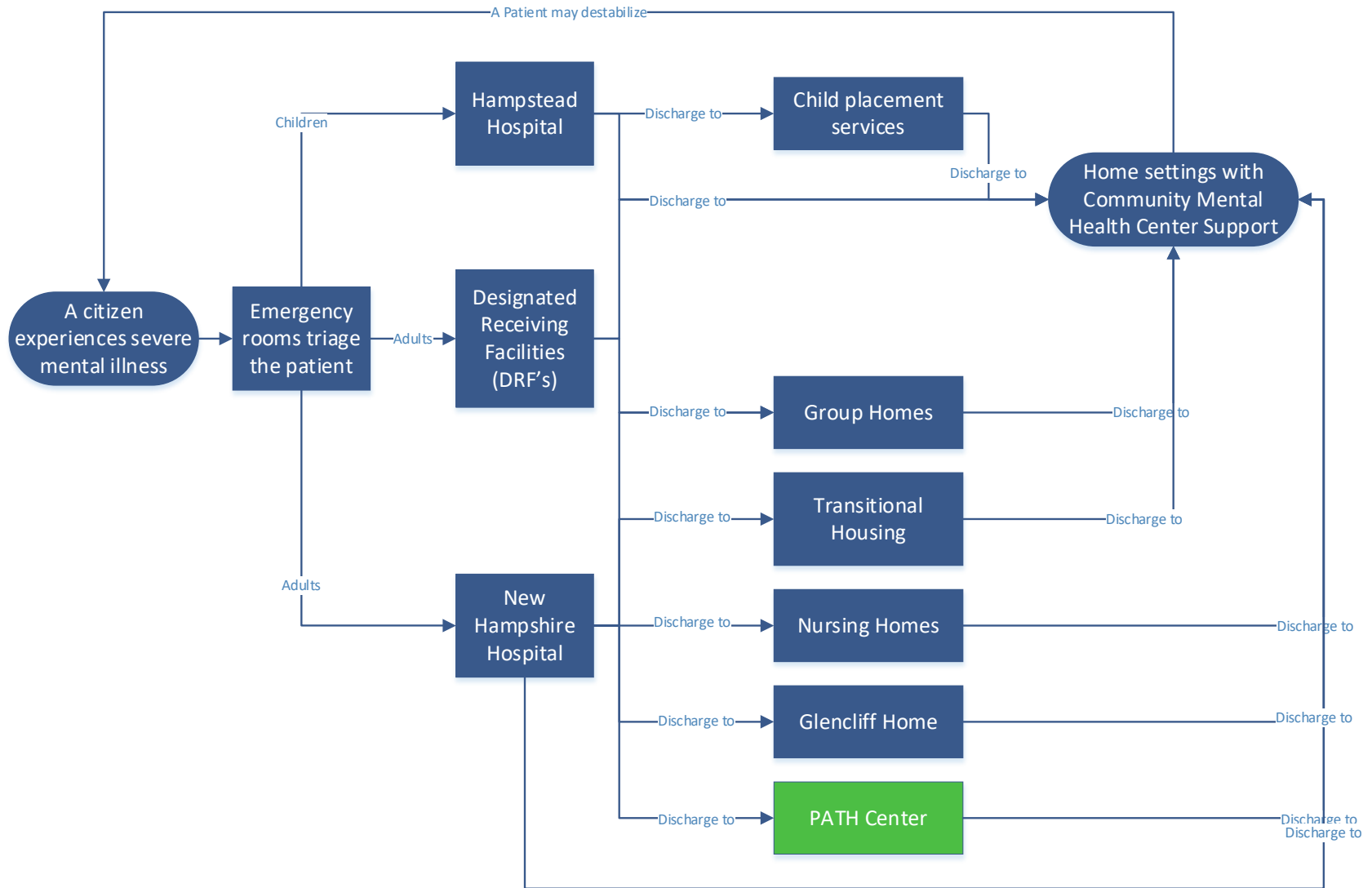
# Background – PATH Center

---

- Funds for transitional housing were appropriated as a part of HB4 in the 2020/2021 biennium.
- The department used a portion of those funds to establish the PATH Center, a 16 bed transitional housing facility.
- The PATH Center opened in September of 2020.
- The PATH Center serves as an active discharge location for patients from New Hampshire Hospital whom are stable, and are awaiting for various community-based resources to be available.



# Delivery System – The Inpatient Mental Health System *(For serious mental illness)*



# Mission & Vision- PATH Center

---



## Mission

*To demonstrate care and compassion for citizens with mental illness by aiding them in integrating back to their communities, whilst offering the least restrictive environment possible.*

## Vision

*The PATH Center will become a model-cell of community integration for citizens with mental illness across the State of New Hampshire, and the country at large, improving the progression of individuals from acute care to community living.*



# Population Served



PATH serves much of the same population that New Hampshire Hospital does.





# Scope– PATH Center

What PATH Does	What PATH Does not do
Transitional housing	Inpatient care
Medication supervision	Involuntary admissions
Therapeutic services	Diagnostic services
Intensive case management & discharge planning	Acute medical services
Coordination with Community Mental Health Centers	Pediatric care



# Tenure and Projected Status of Department Key Leaders



Chief Executive Officer

- Heather Moquin
- 3 years state service



Chief Financial Officer

- Joe Caristi
- 2 years state service



Chief Operating Officer

- Ellen Lapointe
- 1 year state service



PATH Clinical Director

- Debbie Robinson
- 25 years state service

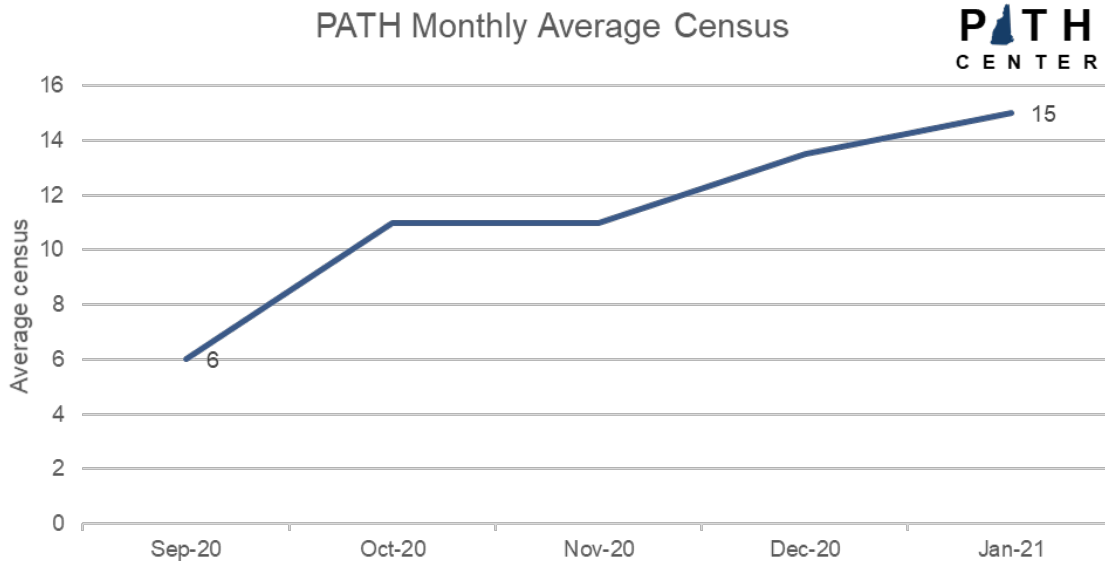


# Key Performance Indicators

The PATH Center



# PATH Referrals- Adults

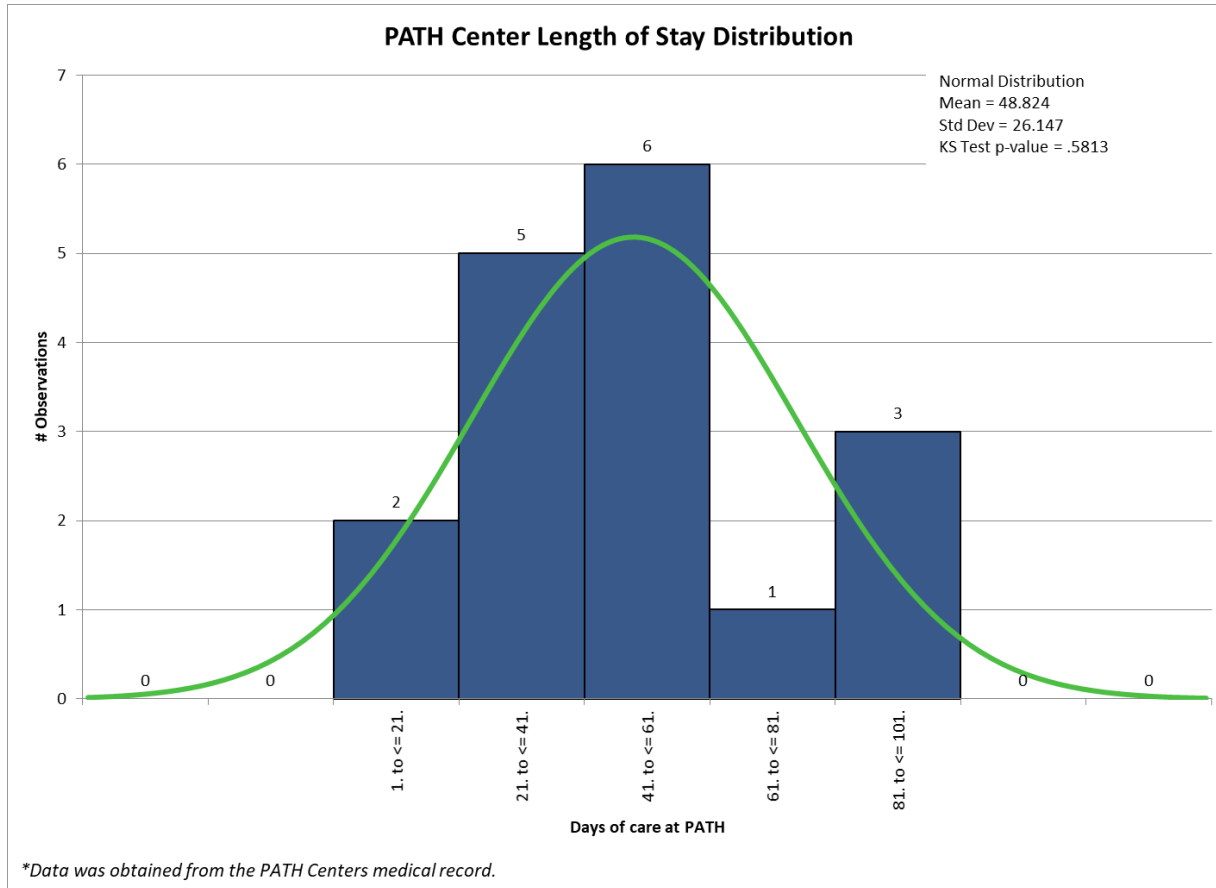


- Census has steadily increased as referral criteria has been refined
- In the month of January, census was consistently at maximum capacity.

*\*Data was obtained from the PATH Center's medical record.*



# PATH Center Length of Stay (LOS)



- Although this data is based on a very limited sample size, it appears patients typically stay at PATH for 21 to 61 days.
- These are days that would have been incurred at New Hampshire Hospital otherwise.



# PATH Summary

---

1. Very new facility.
2. Now running at full capacity.
3. Has greatly improved the state's ability to treat patients in the least restrictive environment for their clinical needs.
4. Has greatly helped open beds at New Hampshire Hospital, keeping the inpatient psychiatry waitlist from growing further during the pandemic.

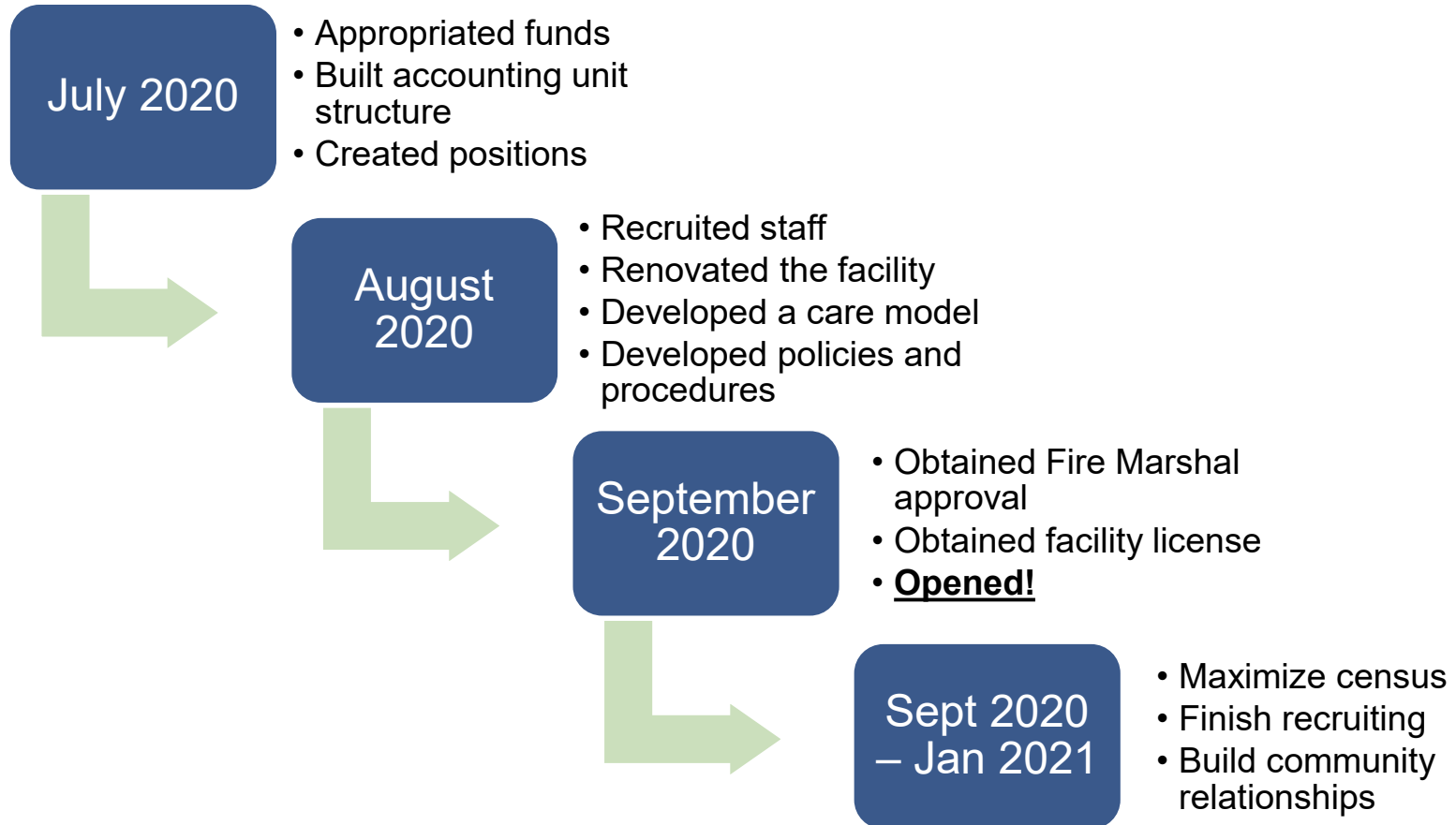


# Key Accomplishments & Challenges

The PATH Center



# PATH- Key Accomplishments





# PATH- Key Challenges

## Short-term

- Building relationships with the community
- Expanding community knowledge of the facility
- Standardizing referral processes and criteria

## Long-term

- Replicating the model in other regions of the state



# Benchmarks, Potential Outcomes, & Staffing

The PATH Center



# Workload Benchmarks

- PATH is a very unique facility, and as such there are no known benchmarks.
- While considered transitional housing, it serves a different patient population than other transitional housing facilities in the state.
- As PATH is providing care that New Hampshire Hospital would have otherwise provided, cost per bed day can serve as a metric to help draw conclusions on return on investment.

Metric	2018 national average for government-owned hospitals	NHH FY22 Governors Budget	NHH FY23 Governors Budget	PATH FY22 Governors Budget	PATH FY23 Governors Budget
Cost per inpatient bed day	\$2,260	\$1,452	\$1,541	\$729	\$754

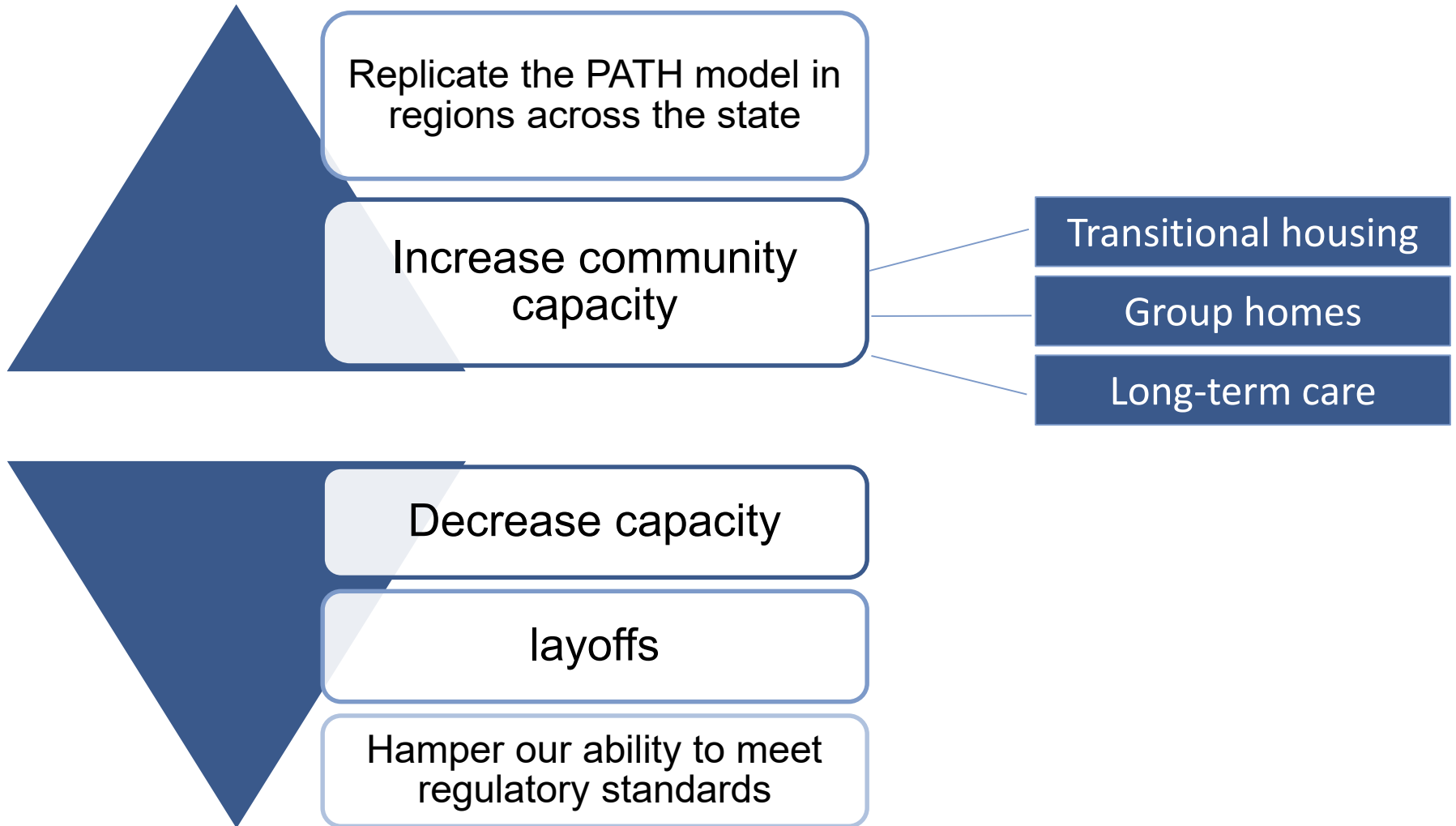
### Sources

1999 - 2018 AHA Annual Survey, Copyright 2019 by Health Forum, LLC, an affiliate of the American Hospital Association. Special data request, 2019. Available at <http://www.ahaonlinestore.com>.

<https://www.kff.org/health-costs/state-indicator/expenses-per-inpatient-day-by-ownership/?currentTimeframe=0&sortModel=%7B%22colId%22:%22Location%22,%22sort%22:%22asc%22%7D>



# 5% Incremental / decremented Outcome



# PATH Staffing

9400 – New Hampshire Hospital	Governor Recommended Positions	Percent of Total Positions
6096- Phillbrook Community Residence	35	100%
Total	35	

- The PATH Center employs 35 full-time positions across 3 shifts, 7 days per week.
- A significant portion of the PATH Center’s staff are in direct care roles such as Nurses, Mental Health Workers, Mental health Councilors, and Case Managers.

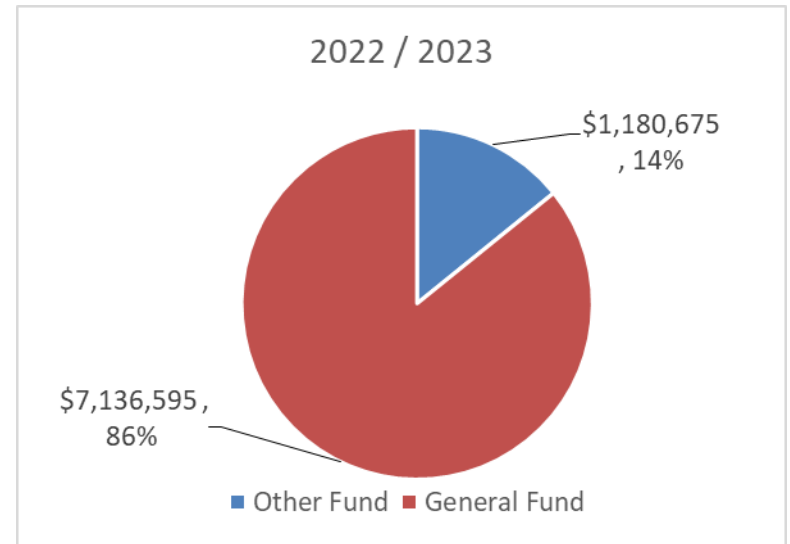
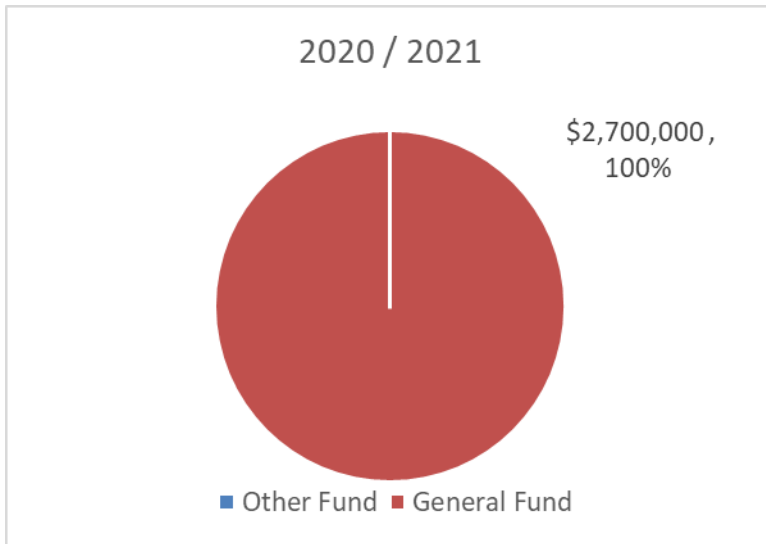


# Financial Summary

The PATH Center



# Budget Chart comparison



# PATH Accounting Units

Activity-Accounting Unit	Accounting Unit Title	Division	Bureau	Budget Book Page #	Budget Briefing Book Page #
9400-6096	Phillbrook Community Residence	NHH	NHH	1144	226

